



CREWCARE LOGISTICS NIG. LTD

Email: crewcarelogisticsnigltd@gmail.com

LIAISON OFFICE:

Plot 11, House 6B
Friends Colony Estate,
Agungi, Lekki Expressway,
Lekki, Lagos State.

HEAD OFFICE:

No 4 Faith Close,
Ihunwo Agari Street,
Stallian Road,
Eledenwo, Port Harcourt
Rivers State

**Construction, Marine Logistics, Supply chain Management,
Engineering support, Materials replacement Parts,
Specialized Security Training, Procurement
of Equipment and Materials, General Services**





About us

CREWCARE Logistics Nigeria Limited (CCLNL) is an indigenous company, established in 2008, major areas of operations include; Construction, Marine Logistics, Supply chain Management, Engineering support, Materials replacement Parts, Specialized Security Training, Procurement of Equipment and Materials, General Services.

The sphere of our capabilities covers the following:

Marine Logistics Services

Ship Management and Logistics supports, Transportation and haulage services, Design, Construction works and repairs of marine Vessels Human resources training and travel supports.

Procurement of security equipment and other specialized Services.

- General equipment leasing, security gadgets installation and maintenance.
- Outsourcing services and provision of specialized Trainings.

Public affairs and Consultancy Services.

- Presently we operate from Lagos and Port Harcourt.
- Our procedures are transparent, customer friendly that are tailored towards the ISO9001 guidelines and ISO 14001 which we aim to achieve and surpass.
- Management of the company is by seasoned professionals, with vast knowledge of the industry, our culture with full compliance with the regulatory authorities.

Core principles-Mission & Vision

- Crewcare is driven by integrity, Safety, honesty, excellence & respect for the environment and the hostcommunity.
- We believe in quality and adopting standard business practice in service delivery.
- The company have zero tolerance to unsafe acts. We do not accept any job(s) or project(s) which the safety concerns outweigh the benefits.
- Transparency at is our priority. The client is in the picture from inception to delivery through constant communication and updates throughout the project life cycle



VISION:

- To be the preferred company in terms of general service provider and consultant for government, public and private sectors in Nigeria.

MISSION:

- Delivering excellent services and creating visible values for our clients.

Scope of services

Construction, Materials replacement Parts

Crewcare is equipped for construction and Materials replacement services.

- Permanent and pre-fabricate building (for resident industrial and Office use).
- Road building Asphalt and surface dressing
- Draining and Erosion control
- Structure Engineering / project Appraisal
- Materials scouting, Procurement and supplies

Supply Chain Management

- Crewcare centralizes management of the flow of Goods, Materials and services and includes all processes that transform materials supply to its final destination.
- By managing the supply chain, we cut excess costs and deliver products to the Clients faster.

Marine

- Ship management, Crewing, regulatory compliance-NIMASA, DPR.
- Provision of Boats for environment management
- Field support Boats, Barges, Crew Boats.



Logistics

- Car lease, Purchase, and maintenance.
- Equipment leases.
- Insurance.
- Provision of trained Drivers
- Vehicle maintenance
- Tracking
- Security gadgets
- Staff transportation



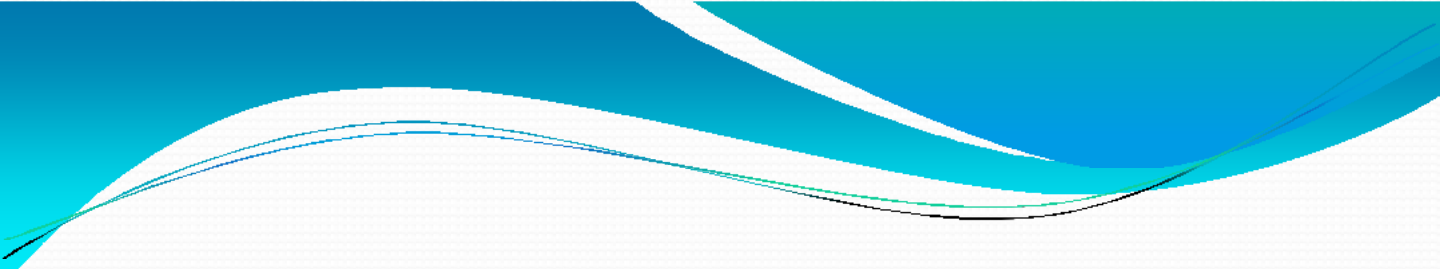


General service contractor

- Procurements
- Hospitality
- Janitorial services
- Furnishings
- Market entry
- Community liaison

HSE Policy

- Crewcare Logistics Nigeria Limited is committed to provision of safe, secured and healthy working environment.
- The company is obligated to comply with all laws and regulations governing health sector, safe working practices, environmental impact controls and healthy communities.
- Our objectives as a corporate organisation is to eliminate as reasonably as possible, all health, safety and environmental hazards while developing cordial relationships with our host communities

- 
- In Crewcare, risk will be control by limiting exposure to hazards and implementing effective measures that tends to minimize the possibility of an injury occurrence, illness, Disease, or any form of environmental degradation.
 - Our pledge is to constantly provide training and retraining of our personnel, subcontractors with provision of adequate protective equipment to ensure that high safety standards are maintained always.

[Managing Director]

Community relations policy

- Crewcare Logistics Nigeria limited community policy is for the integration of local community as stake holders.
- To always maintain mutual understanding in the community through dialogue with Village leaders, liaison officers towards meaningful engagements.
- Preferential recruitment of host community labour, training, subcontracting as a support measure to the host community.
- To empower the indigenes of the host community as stake holders in our operations.

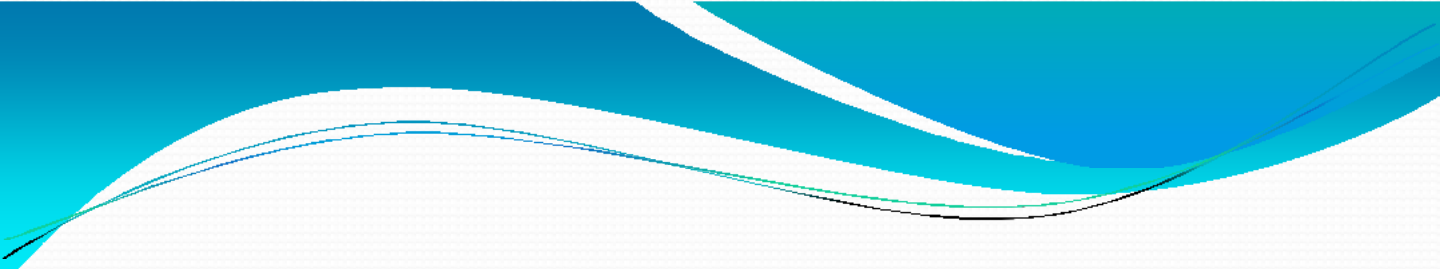
Local content policy


- Adherence and support the local content policy of the Federal Government of Nigeria.
- Crewcare aim to domicile and achieve 70% of our operations, including purchases in Nigeria through Nigerian companies, to domicile logistics, procurement center locally and implement Technology transfer initiatives through training.

[Managing Director]

Business continuity policy

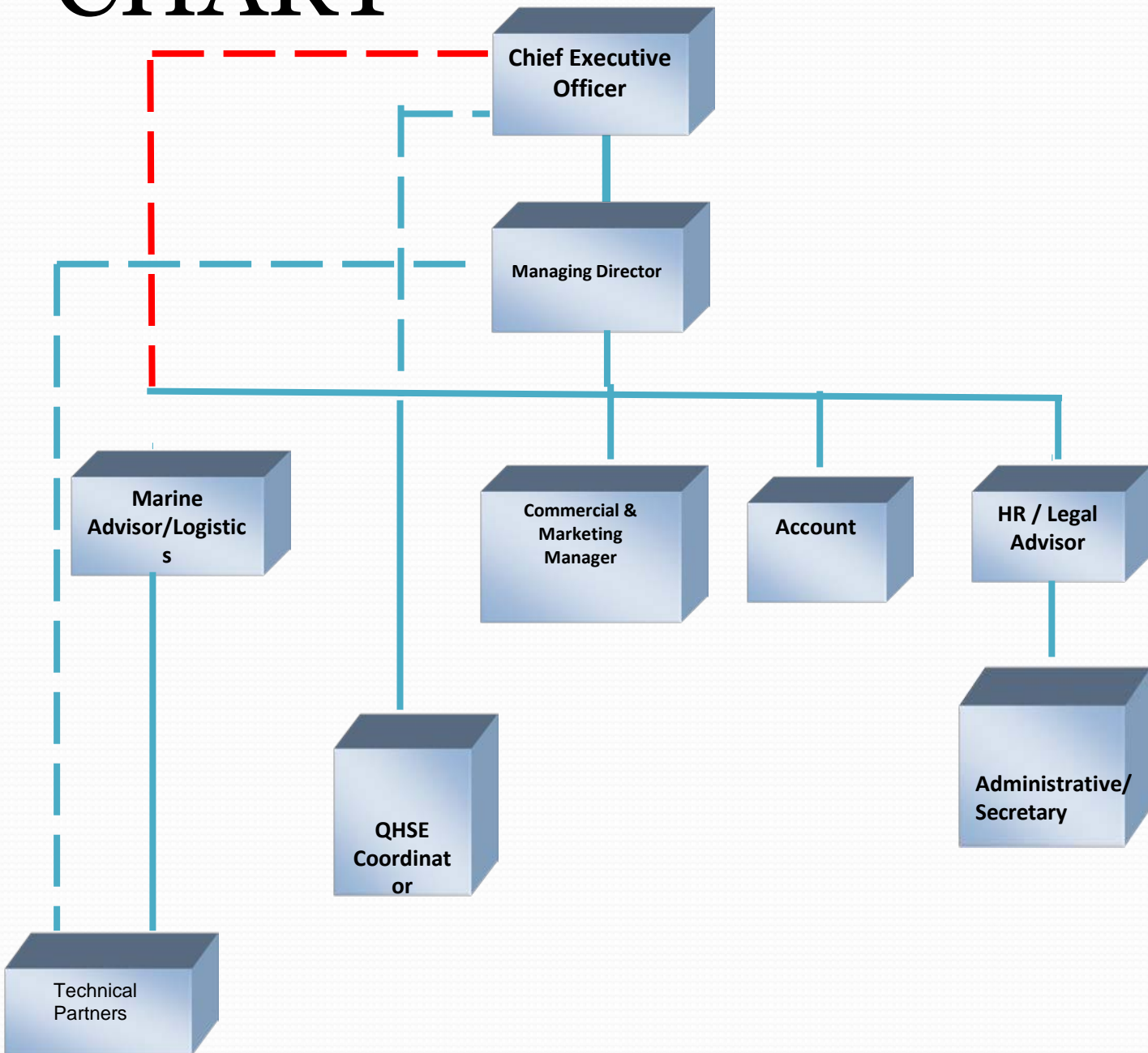
- The company is committed to the security of our treasured assets and personnel to ensure business continuity, in line with these objectives, the following measures are in place to achieve the aim.
- Private Security Personnel would be on guard in all our offices and operational locations
- All newly employed staff members would provide a documented character reference from two guarantors of impeccable reputation prior to their confirmation of their employment.

- 
- All security issues would be investigated, treated and proper remedial actions taken to prevent re-occurrence.
 - All persons working for the organization shall be insured with a life Insurance cover, aside other benefits as part of staff retention plan within the organization
 - All hardware, equipment including the building will be fully insured with the appropriate insurance policy in case of any fire hazard or accident.
 - All documents relating to the company's facility would be safe guarded in a treasury institution or third-party Government licensed authority.

- 
- We shall maintain a robust IT infrastructures system with backups all the time.
 - Our server systems shall be fully backed up all the time with an alternative solution made ready in case of any accident
 - The company would also purchase or upgrade our anti-virus solutions all the time.
 - Cross departmental learning and skills transfer would be encouraged as part of our continuity strategy
 - We will continue to partner with the Government in ensuring that the implementation of the Nigerian content policy by deliberate consideration of Nigerians before expatriates

[Managing Director]

ORGANISATION CHART



— REPORTING LINE
- - FUNCTION LINE



AUDITORS

Auditors:

M/S Tamunoibi & Co. Chartered (Accountants)
9C Station Road, PortHarcourt, Rivers State.
0803 3411823



Contact details

- [Email; crewcarelogisticsngltd@gmail.com](mailto:crewcarelogisticsngltd@gmail.com)

- Phone no.

+2347031254546



BANKERS

Polaris Bank (formerly Skye Bank Plc):

- Cooperate account no. 1771177730, Secretariat building branch, Port Harcourt, River State.-234- 1- 7433615, email:

yescenter@polarisbanklimited.com